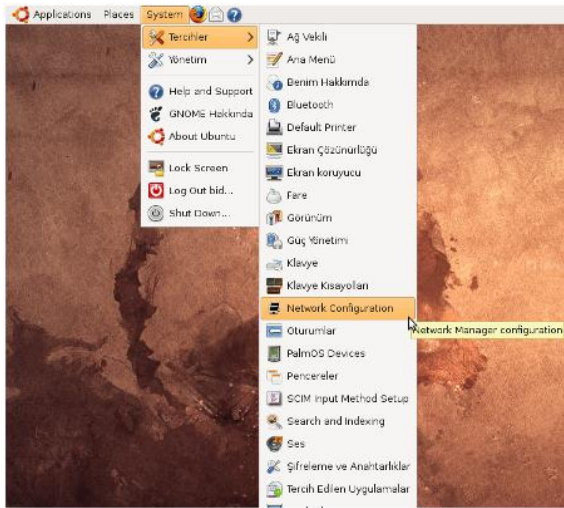
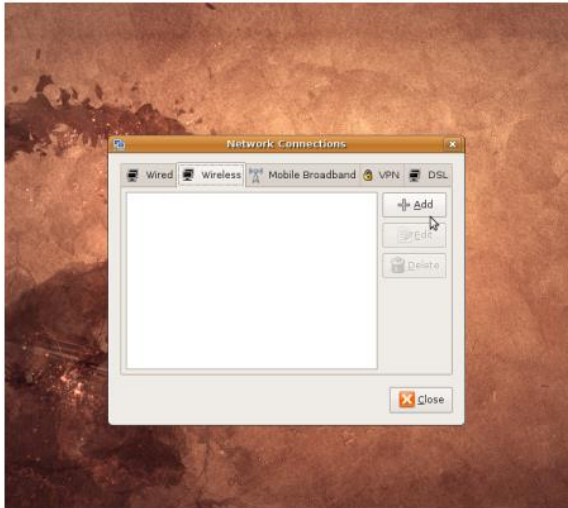


S.D.U Eduroam Ubuntu Connection Settings

1. Click “System ” > “Preferences” and “Network Configuration” in Gnome menu bar on desktop.



2. On the “Network Connections” window select “wireless” tab and click to “Add” button. If you setup another wireless network before, they also will appear in this list.



3. On the “New wireless network” screen set “Connection name” to “eduroam”, “SSID” to “eduroam” and set “Mode” to “Infrastructure”

4. On the “Wireless” tab, the configuration should be like,

Security: WPA2-Enterprise

Authentication: Tunneled TLS (TTLS)

Anonymous Identity: (Same username entry)

Username: On the “**User Account**” tab, if you don’t want to enter password every time please type your email address and email password.

For staff:

name surname **@sdu.edu.tr** should be written.

For Example:

(melihcolpan@sdu.edu.tr)

For undergraduate student:

(in small letters) | student number **@stud.sdu.edu.tr** should be written.

For Example:

(l1234567890@stud.sdu.edu.tr)

For graduate student:

(in small letters) y| student number **@stud.sdu.edu.tr** should be written

For Example:

(yl1234567890@stud.sdu.edu.tr)

The password is your email password. If you change it yet, the password is your Turkish Identification Number’s first 8 digits. (TC ID Number’s first 8 digits)

After the configuration the Ubuntu will be connect to network.