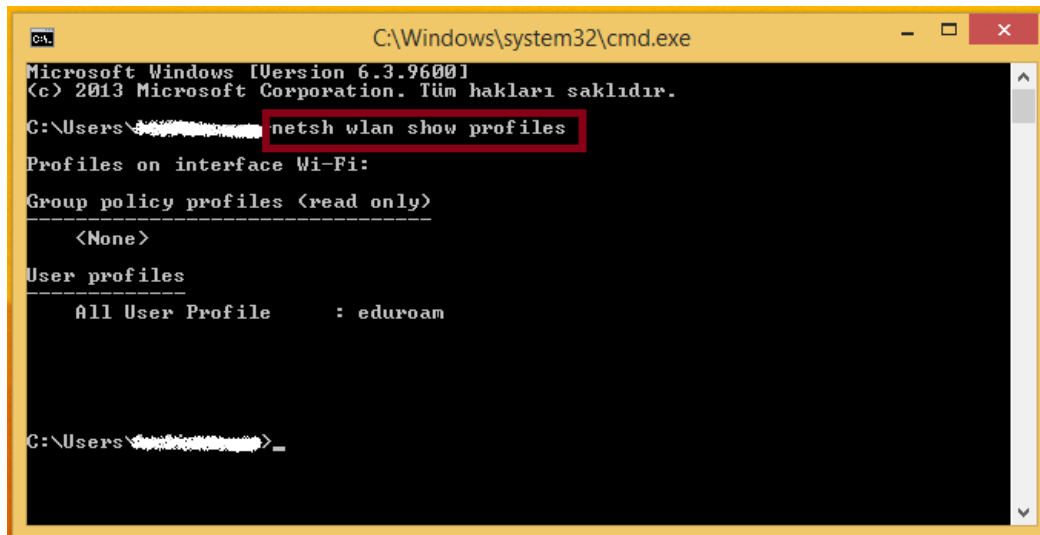


S.D.U Eduroam Windows 8/8.1 Connection Settings

1. Press the “Windows” key on keyboard to switch to “Windows Start Screen” and type “cmd” in search box on this screen. Left click the open “Command Prompt”



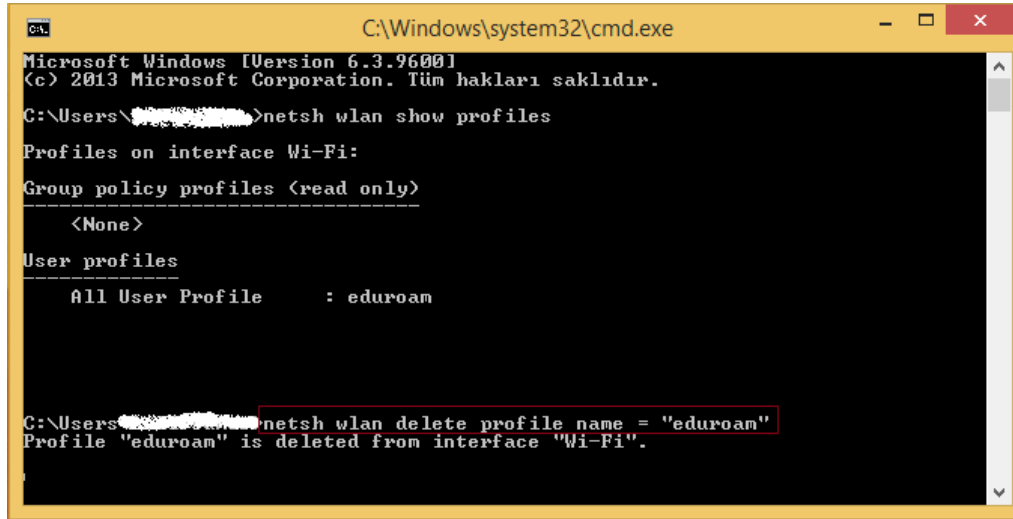
2. Type “netsh wlan show profiles” (without the quotes) and press “Enter” on keyboard. Please check whether the “eduroam” profile is in list. Skip to step 4 if there is no record in this list.

A screenshot of a Windows Command Prompt window. The title bar reads 'C:\Windows\system32\cmd.exe'. The window contains the following text:

```
Microsoft Windows [Version 6.3.9600]
(c) 2013 Microsoft Corporation. Tüm hakları saklıdır.
C:\Users\... netsh wlan show profiles
Profiles on interface Wi-Fi:
Group policy profiles (read only)
-----
<None>
User profiles
-----
All User Profile      : eduroam
C:\Users\...>
```

The command 'netsh wlan show profiles' is highlighted with a red box. The output shows that there are no group policy profiles and one user profile named 'eduroam' is listed.

3. If "eduroam" is available in list, please use "netsh wlan delete profile name ="eduroam" " command to remove it from list.



```
C:\Windows\system32\cmd.exe
Microsoft Windows [Version 6.3.9600]
(c) 2013 Microsoft Corporation. Tüm hakları saklıdır.
C:\Users\...>netsh wlan show profiles
Profiles on interface Wi-Fi:
Group policy profiles (read only)
    <None>
User profiles
    All User Profile      : eduroam
C:\Users\...>netsh wlan delete profile name = "eduroam"
Profile "eduroam" is deleted from interface "Wi-Fi".
```

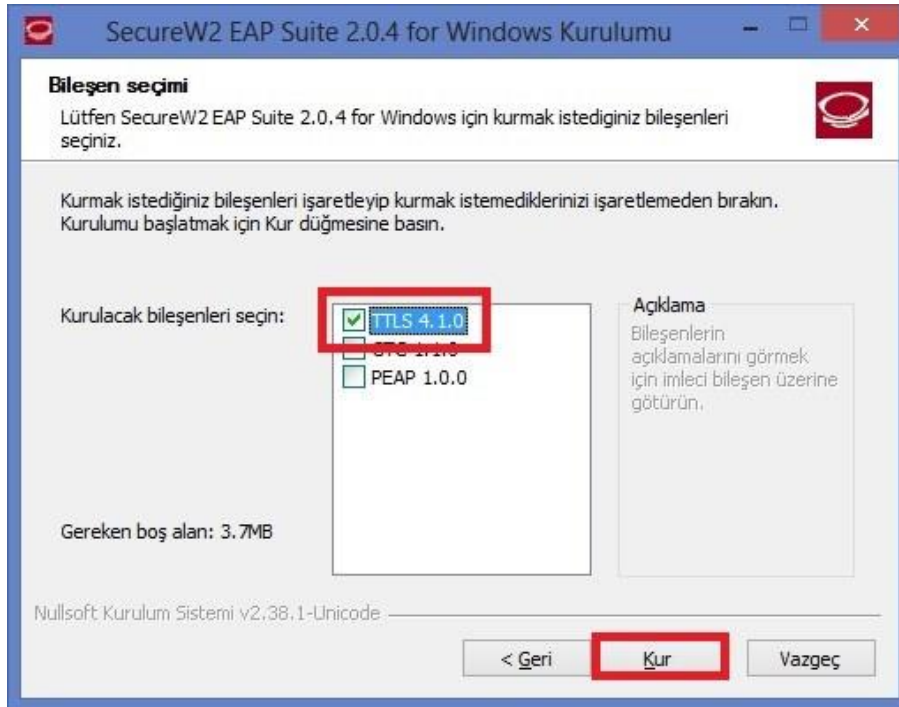
4. After downloading the **SECUREW2** program, start setup by double-clicking the program and click "Next >"



5. Click "I Agree" button



6. Choose "TTLS 4.1.0" option and click "Install"



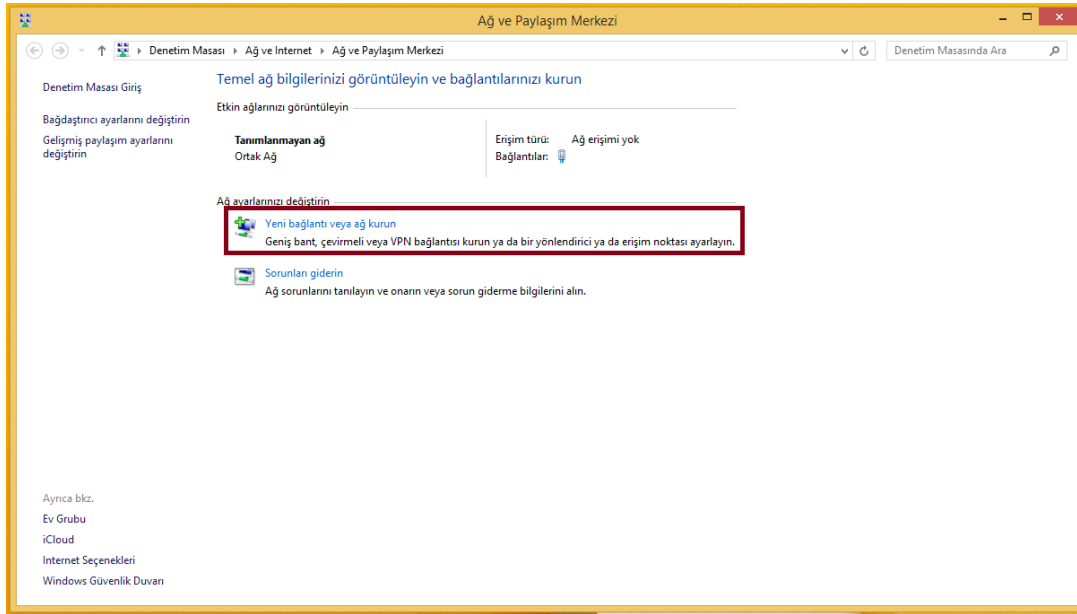
7. When the installation is finish click **“Finish”** to restart the computer.



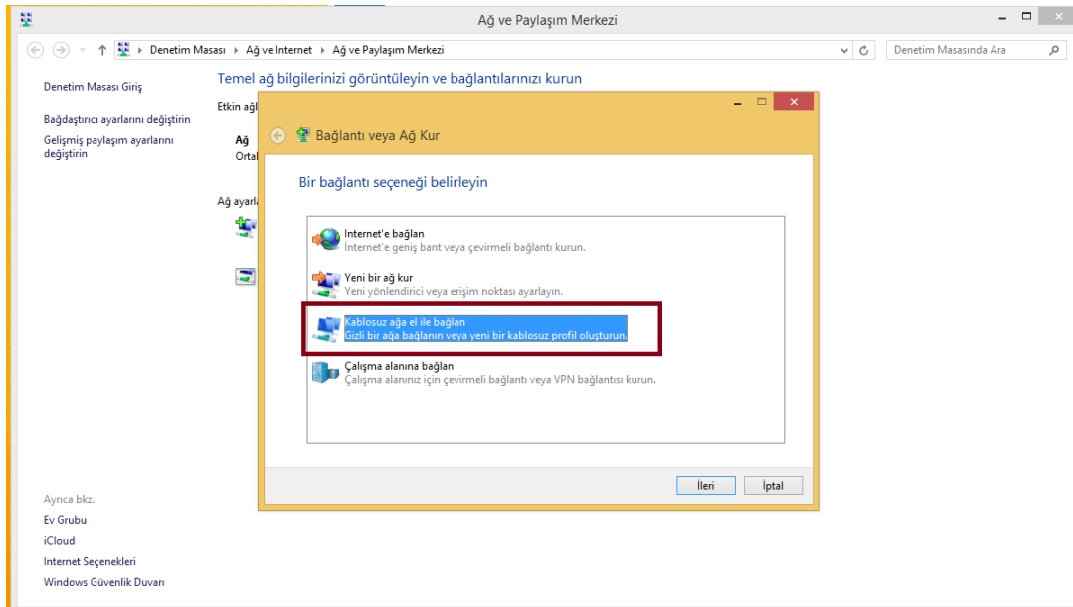
8. Right click on **“Open Network and Sharing Center”** located in the bottom right corner on desktop.



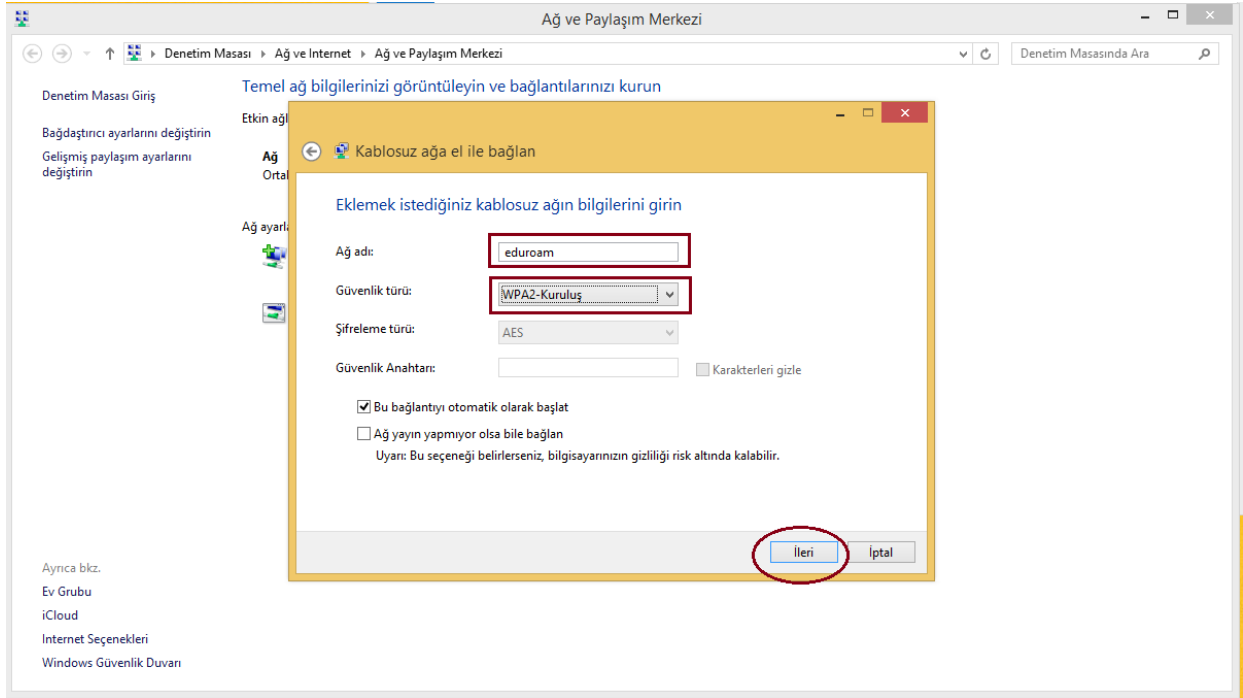
9. On the "Network and Sharing Center" window click "Set up a new connection or network"



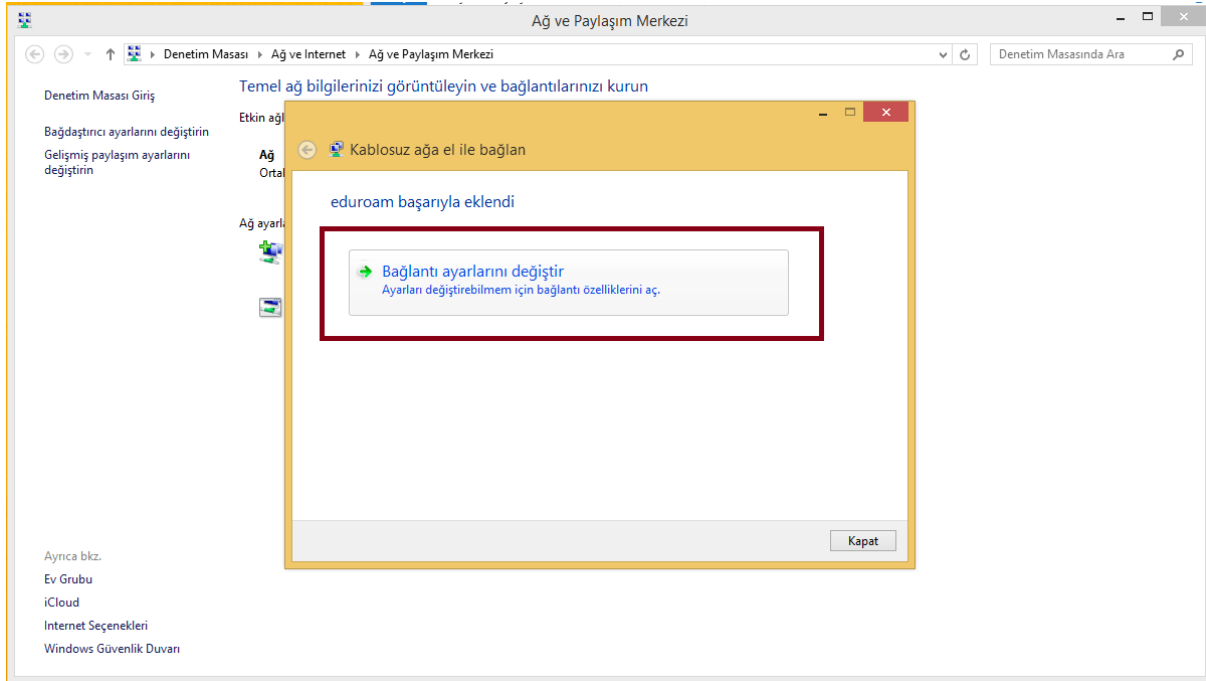
10. On the "Set up a connection or network" window please click "Manually connect to a wireless network" and click on the "Next" button.



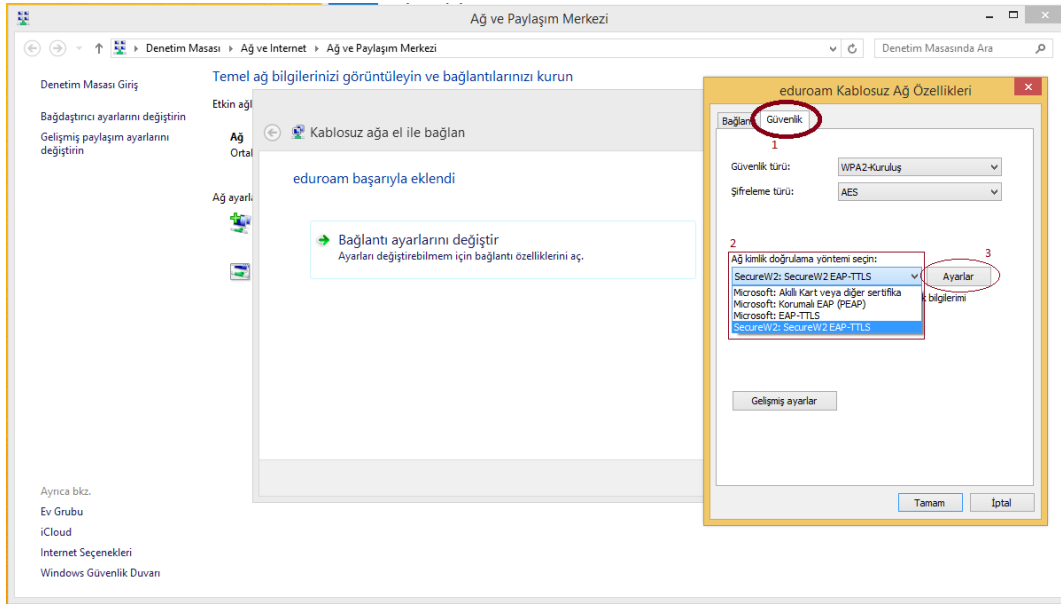
11. In the next step, Enter the “**eduroam**” to “Network Name”. Choose “**WPA-2 Enterprise**” Security Type and click “**Next**” button.



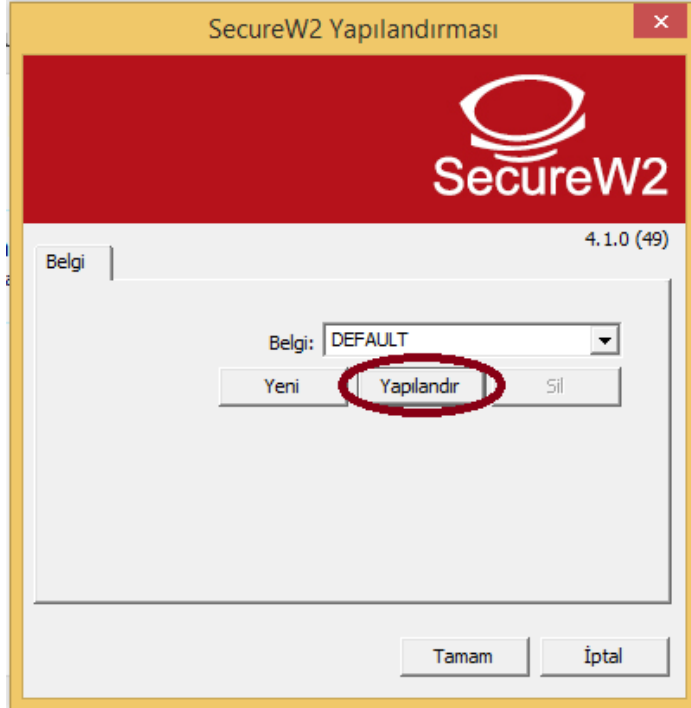
12. In the next step click “Change connection settings”



13. On the “Eduroam wireless network properties” window please click “**Choose a network authentication method**” in the “**Security**” tab and choose “**SecureW2: SecureW2 EAP-TTLS**” then click the “**Settings**” button.



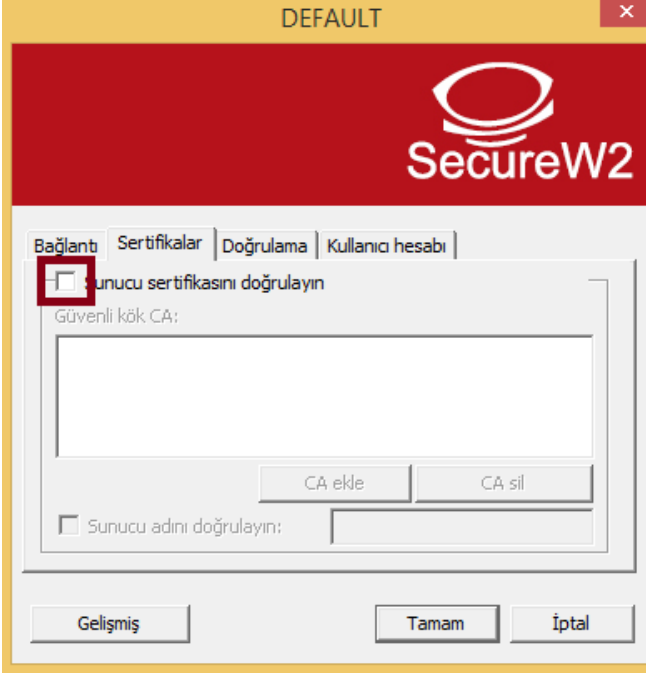
14. Click “**Configure**”



15. On the “**Connection**” tab, if “**Use alternate outer identity**” is then checked please uncheck it.



16. On the “**Certificates**” tab, if “**Verify server certificate**” is checked please uncheck it.



17. On the “Authentication” tab, choose “PAP” as “Select Authentication Method”



DEFAULT

SecureW2

Bağlantı | Sertifikalar | Doğrulama | Kullanıcı hesabı

Doğrulama yöntemi seçin: PAP

EAP Tipi:

Yapılandır

Gelişmiş Tamam İptal

18. On the “User account” tab please uncheck “Prompt user for credentials”. Write your SDU e-mail adress (with @sdu.edu.tr) to “Username” section and write your SDU mail password to “Password” section.



DEFAULT

SecureW2

Bağlantı | Sertifikalar | Doğrulama | Kullanıcı hesabı

Kullanıcı bilgilerini sor

Kullanıcı adı: SDU MAIL ADRESİNİZ

Parola: SDU MAIL ŞİFRENİZ

Alan:

Bilgisayarı açmak için bu hesabı kullan

Gelişmiş Tamam İptal

19. Close all windows with “Ok”. After correct settings you can connect to eduroam network.

